

Hydroponics Growing System

Model: SH201-CO



Sunnypower New Energy Co.,Ltd.

ADD:4 Building,caifa Industrial Zone,181# Remin Road,Fucheng Town,Longhua District,Shenzhen,China

TEL:+86-133-7653-9965

FAX:0755-29378633

E-mail:sales04@muizlux.com

<http://www.muizlux.com>



1.Product introduction

LED hydroponic plant growth lamp is a plant lighting system. According to the natural law of plant growth and the principle of photosynthesis, water pump circulation, fertilizer compensation and light compensation are provided for plants. Can promote growth, prolong flowering, improve quality. This product has the following features:



1. LED lamp bead for plant lamp:

High power SMD LED lamp bead, 0.5W/ PC. Gold $\geq 99.99\%$ gold wire, pure copper support, high brightness, low light decline;

2. Reasonable spectral matching:

According to the spectrum requirements of different growth stages of plants, intelligent Settings: seedlings, vegetables, flowering and other dedicated spectrum. Meet the needs of different growth stages of plants.

It includes deep blue light 460nm, which promotes root and stem growth, red light 660nm, which has a significant effect on plant photosynthesis and growth rate, infrared light, which prevents plant growth, and ultraviolet light, which prevents pests and diseases.

3. Intelligent timing switch:

Lighting duration (1-23h) can be set according to the growth needs of different periods of plants, and automatically restart the next day without manual operation;

4. Intelligent brightness adjustment:

Light intensity can be adjusted according to the needs of plant growth in different periods (10%- 100% stepless cycle dimming);

5. Energy saving and environmental protection:

Low heat, low power consumption, high light efficiency, long life (50,000 hours), no ultraviolet and infrared radiation, zero emission, energy saving more than 80%.

6. Safe and reliable:

Low voltage drive, no electric shock danger.

7. Simple operations:

Touch screen operation, LCD display, simple and clear, intelligent science;

8. Application areas:

All kinds of vegetables: pepper, eggplant, tomato, cabbage, lettuce, etc.

2.Overview



3.Size



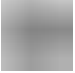





4.Specification

Model	SH201
Materials	Aluminum alloy+ABS+PC
Lamp Color	White/Grey/Blue/Green
Light Sources	192PCS 0.5W High Power LED W:B:R:IR=142:12:34:4
Power	24W
CCT	5000K,460nm,660nm,730nm
Spectrum	380-800nm
Growth tank	12
Water level control	Visible line
Sink volume	3.8L
Adapter type	U.S., European, and U.K. regulations
Input Voltage	AC100-240V
Frequency	50/60Hz
Output Voltage	DC24V
Output current	1.0A
Control Mode	Touch Control
Timing mode	1-23H,Cycle memory timing, no need for manual operation
Spectral mode	Seedling、Veg、Blooming
Dimming Mode	10%--100% Stepless dimming
Operating temperature	-20°C~+45°C
Lift-span	>50000H

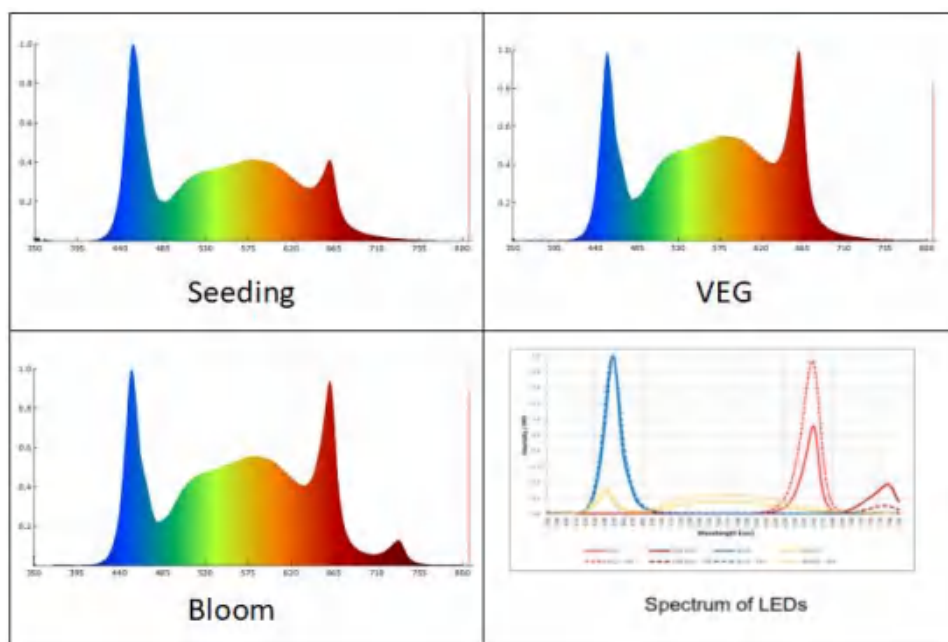
❖ Service life and maintenance for ambient temperature of 25°C/77°F

5. Function Introduction

icon	Function
	Switch button for turning on or off the lamp
	Mode switch button for switching between three spectra: Seedling、Veg、Blooming
	Brightness dimming button; In timing mode, it is used to subtract digits
	Brightness button; In timing mode, add numbers
	Timing button: Press once to enter the timing function, and press again to exit the timing function
	Pump button, press the indicator light to work, press the indicator light to stop working

6.Spectra

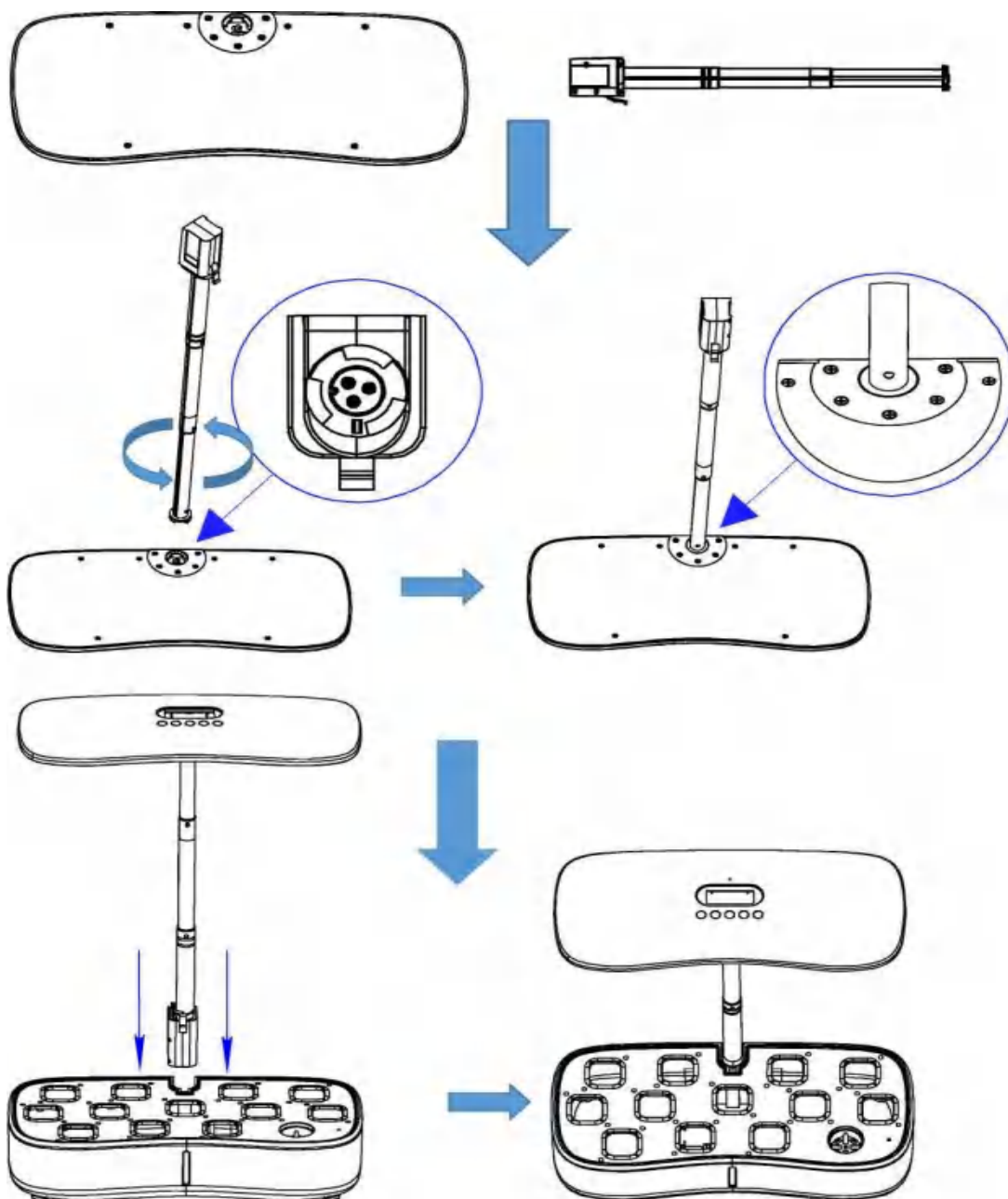
SH201 Plant Growth Lighting offers complete custom light formulation solutions designed to move your greenhouse business forward. The spectrum options of beyond, VEG and Bloom are now available on SH201 to better meet the needs of growers in optimizing the spectral content and light levels of any crop at any growth stage and geographical location.



The SH201 spectrum provides continuous spectral photon emission in the PAR380-800nm wavelength range, balancing energy efficiency and light quality to meet the required plant response and human working environment.

- ❖ We can customize spectra according to different factory production requirements according to customer requirements.

7. Installation



8. Planting Methods

Easy To Setup

Understanding the use steps of the product can make you use the product better



Planting methods of leafy vegetables and fruits:

1. Soak the seeds with water. The soaking time of seeds varies with the soaking time of plants.
2. Put the spongy soil into the planting tank and soak in water.
3. Mix nutrient solution and fill the liquid in the planter water tank to the MAX scale line.

4. After soaking the seeds thoroughly, place them in the middle of the soaked sponge soil, and then place them in the planting trough.
5. After everything is ready, switch on the indicator to switch to the redundant mode.
6. Adjust the mode and brightness and illumination time according to the different growth condition of plants.

9. Accessories

NO.	Name	Unit	Qty
1	Top Light Board	PCS	1
2	Extensible rod	PCS	1
3	Water tank with motor	PCS	1
4	Water tank cover	PCS	1
5	Planting Basket	PCS	12
6	24W 24V/1A adapter	PCS	1
7	Planting Sponge	PCS	12
8	Solid Nutrient Solution	PCS	2



10. Packaging

- ◆ The external dimension of inner box is (unit: mm) :L*W*H=435*228*150;
- ◆ Outer box dimensions (unit: mm) :L*W*H=475*450*460;
- ◆ Packing quantity per carton :6 PCS.

11.Warning

- ◆ Do not place the device near the fire.
- ◆ Do not immerse the device in water.
- ◆ After the power is turned on, do not touch the surface of the LED lamp;
- ◆ Do not excessively vibrate or shock the equipment;
- ◆ Do not remove the device

12.Note

Any other items not covered by this specification shall be determined by the parties through consultation.